

Isolated Large Cell Calcifying Sertoli Cell Tumor in a Young Boy, not Associated with Peutz-Jeghers Syndrome or Carney Complex

Jin-Ping Lai^{1,2},
Chyi-Chia Lee¹,
Melissa Crocker^{3,4},
Mufaddal Najmuddin²,
Eileen Lange^{3,4},
Maria Merino¹ and
Constantine A Stratakis^{3,4}

Abstract

Background: Large cell calcifying sertoli cell tumor (LCCSCT) is an exceedingly rare lesion of the testicle. It is most often seen in patients with Carney complex (CNC) or Peutz-Jeghers syndrome (PJS). We now report the first pediatric patient with what appears to be bilateral LCCSCT and no other conditions or a genetic syndrome, such as PJS or CNC, have been associated with it.

Methods: A 10-year-old boy was found to have a right testicular mass during a routine pediatric examination; he underwent right orchiectomy. He was then evaluated clinically for PJS or CNC and underwent genetic testing. His tumor was studied by immunohistochemistry for the expression of calretinin, NY-ESO-1, inhibin, CD99, S100, PLAP, AE1/AE3, Bcl-2, p53, and Mib1.

Results: Patient did not have clinical features or genetic abnormalities of CNC and PJS. Microscopic features showed large, round or cubical intratubular and aggregated tumor cells with prominent nuclear atypia, large and prominent nucleoli and extensive calcification. In the Immunohistochemical studies, calretinin and inhibin alpha were up regulated in LCCSCT as compared to the adjacent benign Sertoli cells. Meanwhile, NY-ESO-1 and CD99 were down-regulated in LCCSCT. Focally and weakly positive S100 was found in the tumor tissue, but no S100 expression was present in the adjacent Sertoli cells. There was no expression of PLAP, P53, Bcl-2, Mib1 and AE1/AE3 in LCCSCT and adjacent Sertoli cells. Micro-calcifications were found in the other gonad by ultrasonography, suggesting LCCSCT.

Conclusion: LCCSCT is a rare testicular neoplasm, and may present in isolated rather than in more typical association with syndromes such as CNC and PJS.

Keywords: Large cell calcifying sertoli cell tumor; Carney complex

- 1 Laboratory of Pathology, National Cancer Institute, National Institutes of Health, Bethesda, MD 20892, USA
- 2 Department of Pathology, Saint Louis University School of Medicine, St Louis, MO 63104, USA
- 3 Section on Endocrinology and Genetics, Program on Developmental Endocrinology Genetics (PDEGEN), Eunice Kennedy Shriver National Institute of Child Health and Human Development (NICHD), USA
- 4 Inter-Institute Pediatric Endocrinology Training Program, National Institutes of Health (NIH), Bethesda, MD 20892, USA

Corresponding author: Jinping Lai

✉ jinpinglai@slu.edu

Department of Pathology, Saint Louis University School of Medicine, St Louis, MO 63104, USA

Tel: 001-314-577-8782

Tel: 001-314-577-6132

Introduction

Sertoli cell tumors account for approximately 4% of all testicular tumors in childhood [1,2]. Based on the distinct pathological features and clinical presentation, large cell calcifying sertoli cell tumor (LCCSCT) has been recognized as a rare variant of sertoli cell tumors. It is most often reported in patients with the familial lentiginoses, Carney complex (CNC) along with cardiac myxomas, pituitary, and adrenal tumors [3], or Peutz-Jeghers syndrome (PJS) in association with gastrointestinal hamartomatous polyps and other neoplasms [4,5]. Rarely, LCCSCT is seen in the context of tuberous sclerosis or Bourneville syndrome [6].

We report the case of a young boy with LCCSCT without any of the above syndromes, pointing to the possibility that this tumor can in fact occur in a sporadic, isolated setting. We also performed immunohistochemistry for NY-ESO-1, calretinin, inhibin alpha, S100, CD99, PLAP, P53, Bcl-2, Mib1 and AE1/AE3 in the LCCSCT and adjacent benign Sertoli cells.

Case Report

The patient initially presented to the urologist at the age of 10 years and 3 months after a mass was discovered in his right testis during a routine examination. He had no additional symptoms.

He had been previously healthy except for frequent episodes of otitis media as an infant; his only surgeries were placement of myringotomy tubes and an adenoidectomy. He had a clavicular fracture at the age of three. He was not on any medications. His growth records were available from age 5 and showed consistent height at the 50th to 75th percentiles and weight at the 25th percentile. At the time of presentation to the urologist, the right testis was described as firm and hard and larger in size than the left testis. Ultrasound revealed a calcified mass occupying 40% of the volume of the testis with additional micro-calcifications within the normal tissue. Tumor markers including CA-125, CEA, AFP and beta-HCG were normal. A right orchiectomy was performed. Additional investigations included an echocardiogram and an electrocardiogram, both of which were normal. A CAT scan of the abdomen and pelvis revealed no metastasis. Gonadotropins and testosterone were known to be in the pre-pubertal range, and other pituitary functions were normal. Serial measurements of Inhibin B were 109 pg/mL, eight months after surgery, and 180 pg/mL, 15 months after surgery. A repeat testicular ultrasound noted micro-calcifications in the left testis. Bone age had remained normal with no advancement. Growth had remained stable, and the left testis had enlarged to 8 milliliters over the last 15 months following surgery with development of Tanner II stage pubic hair. The remainder of the examination remained normal to date.

Immunohistochemistry

Paraffin embedded tissue sections (5 µm) were deparaffinized through xylene and graded alcohols. Immunohistochemical stains for NY-ESO-1 (Invitrogen, 1:100 dilution), Calretinin (Zymed 1:50 dilution), Inhibin alpha (Serotec, 1:10 dilution), S100 (BioGenex, 1:8000), PLAP (BioGenex, 1:100), AE1/AE3 (Dako, 1:100 dilution), CD99 (12E7, Dako, 1:100 dilution), Bcl-2 (Dako, 1:20 dilution), Ki-67(Mib1, Dako, 1:200) and P53 (DO-7; DAKO, 1:1000 dilution) were done after antigen retrieval using target retrieval solution, low pH (DAKO) [7]. Slides were incubated in Tris goat (3%) for 15 min and then incubated for 1 to 2 h at room temperature with primary antibodies. Detection was carried out on an automated system (Autostainer; DAKO) using a horseradish peroxidase/3,3'-diaminobenzidine polymer-based detection system (Envision+; DAKO) according to the manufacturer's recommendations. Images were taken using an Olympus Bx41 microscope, objective UPlanFI 40x/0.75 ∞/0.17, with an adaptor U-TV0.5x/C using a digital camera Q-imaging Micropublisher 5.0RTV. The images were captured using "Q-Capture Version 3.1" and imported into Adobe Photoshop 7.0 [7].

Genetic analysis of carney syndrome and PJS

DNA was extracted from peripheral blood and sequenced for PRKAR1A and STK11/LKB1, the genes for CNC and PJS, respectively, by previously reported standard methods [8,9].

Results

Histological findings

Grossly, his right testicular tumor consisted of a tan, well-demarcated and firm mass with calcification measuring 2.0 cm

in diameter. Microscopically, it was composed of large, round or cubical tumor cells with abundant eosinophilic cytoplasm, prominent nuclear atypia, and some with prominent nucleoli. Tumor cells were arranged in cords, trabeculae, clusters and small sheets. There were several foci of intra-tubular growth patterns. Calcification was present. Some areas showed abundant eosinophilic stroma and lymphocyte infiltrate (**Figure 1**).

Immunohistochemistry

In immunohistochemical studies, calretinin and inhibin alpha were up-regulated in LCCSCT as compared to adjacent benign sertoli cells, while, NY-ESO-1 and CD99 were down-regulated in LCCSCT (**Figure 2**). S100 was focally and weakly positive in LCCSCT but not in the adjacent sertoli cells. There was no expression of PLAP, P53, Bcl-2, Mib1 and AE1/AE3 in both LCCSCT and adjacent sertoli cells (**Figure 2**).

Clinical follow up and genetic analysis

He had been followed up for 17 months after right orchiectomy. A calcification was found in his left testicle by ultrasound examination (**Figure 3**). During his most recent visit at the National Cancer Institute, given the association of LCCSCTs with Carney complex and Peutz-Jaghers syndrome, he underwent a cardiology consult, EKG and CT of the abdomen and pelvis, all of which were normal, and was genetically tested for Carney complex and PJS. All the tests returned negative and he had not demonstrated any complications of either syndrome. All his hormone levels were normal in range (**Table 1**).

Discussion

Large cell calcifying Sertoli cell tumor (LCCSCT) is an exceedingly rare variation of sertoli cell tumor of the testis. This 10 year old boy with an isolated LCCSCT was diagnosed based on the characteristic histologic features and the immunohistochemical

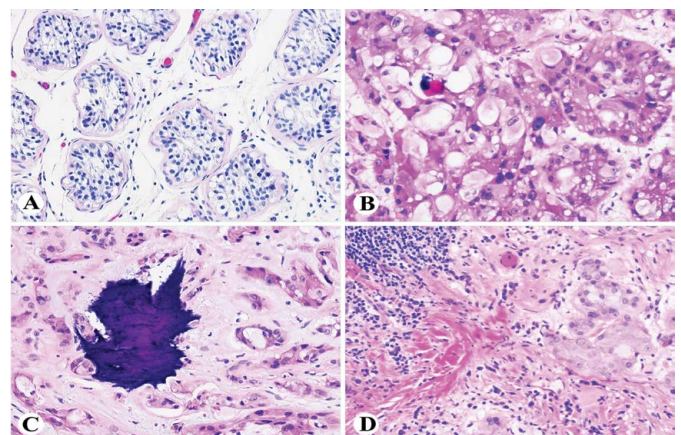


Figure 1: Histology of the large cell calcifying sertoli tumor: A, benign sertoli cells; B, tumor cells are large, with abundant eosinophilic cytoplasm, nuclear atypia and some with prominent nucleoli; C, tumor with calcification; D, abundant eosinophilic stroma and lymphocyte infiltrate present in the tumor.

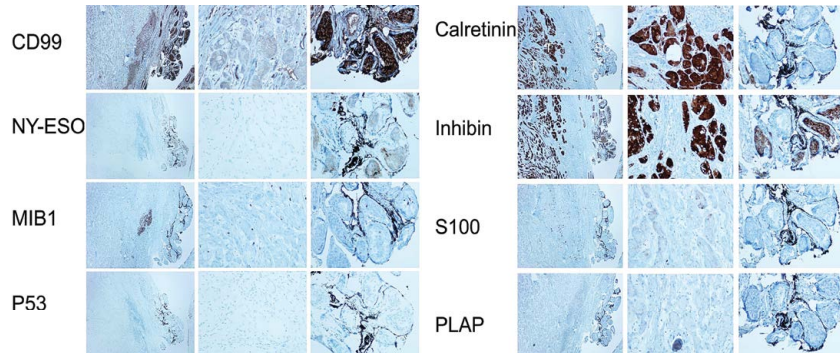


Figure 2: Immunohistochemistry of the large cell calcifying sertoli tumor. Left panel with low power (x40) shows indicated protein immunoreactivities in large cell calcifying sertoli cell tumor tissue at the left side (T) and in the adjacent benign sertoli cell tissue at the right side (SC). Middle panel shows the indicated protein immunoreactivities in the LCCSCT (x200) and right panel shows the indicated protein immunoreactivities in the benign sertoli cells (x200).

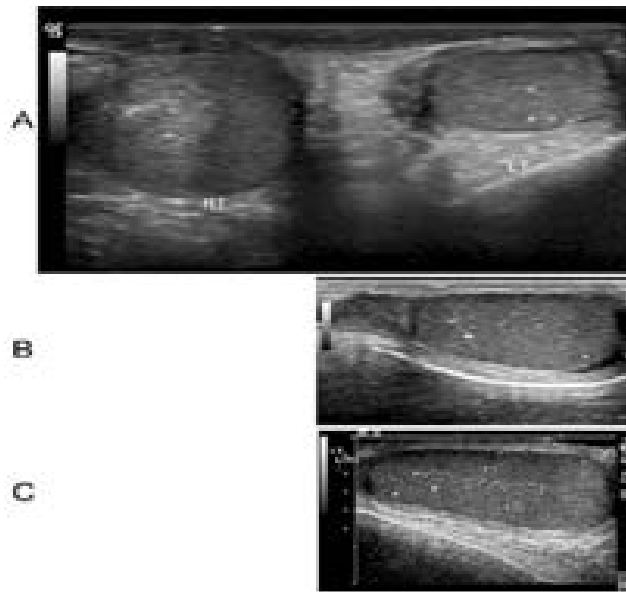


Figure 3: Ultrasound images of the testes. A, a mass with calcification present in right testis and calcification in left testis before surgery; B-C, calcification present in left testis 8 months (B) and 17 months (C) after right orchiectomy.

profile of the lesional tumor cells. As LCCSCT is often seen in patients with Carney Complex (CNC), Peutz-Jegher syndrome (PJS), and other syndromes. In the present case, we carefully examined the patient, performed genetic analysis for CNC and PJS. We did not find evidence of above syndromes or presence of other pathology. We first compared the tumor NY-ESO-1, CD99, Inhibin alpha, and Calretinin levels to that in the adjacent benign sertoli cells and found an upregulation of calretinin and inhibin alpha, and a down-regulation of NY-ESO-1 and CD99 in the LCCSCT cells.

LCCSCT usually presents in a benign behavior with low malignant potential in children [1,10,11]. Classification of LCCSCT is divided into two subgroups. “Early-onset LCCSCT” has a mean age of onset of 17 years and is usually bilateral, multifocal, hereditary and associated with other clinical signs of the dysplastic syndromes. “Late-onset LCCSCT” presents with a mean age of onset of 39

years and is monofocal, monolateral and asymptomatic [5,11]. Only 5.5% of early-onset LCCSCT were found to metastasize, while 23.5% of late-onset LCCSCT developed metastases [12]. Malignant features include large sized solid tumor (>4 cm in diameter) and demonstrate extratesticular extension, necrosis, cellular atypia and high mitotic rate (>3 mitotic figures in 10 high power fields). In the present case, although the tumor size was less than 4 cm in diameter, we found 2 mitotic figures in 10 high power fields and there was prominent cellular atypia. During the frozen section, pathology was interpreted as malignant tumor versus sertoli cell tumor, therefore a complete orchiectomy was performed. The patient had been followed up for 17 months, and no metastasis was found; however, calcification was noted in the other testis.

In immunohistochemistry of LCCSCT, positive expression of Inhibin alpha, calretinin, S100 and CD99 have been reported

Table 1: Levels of hormones and selected tumor markers 15 months after right orchiectomy.

Hormone	Level	Normal range
ACTH	40.4 pg/mL	
Cortisol	13.5 mcg/dL	
DHEA	310 ng/dL	<500 ng/dL
DHEA-S	80 mcg/dL	<15-120 mcg/dL
Androstenedione	52 ng/dL	<15-50 ng/dL
LH	0.3 u/L	
FSH	3.2 u/L	
Total testosterone	9.8 ng/dL	<7-20 ng/dL
Free testosterone	0.1 ng/dL	
Estrone	<10 pg/mL	
Estrodiol	<10 pg/mL	
T3	148 ng/dL	41-205 ng/dL
T4	8.2 mcg/dL	4.2-11.5 mcg/dL
TSH	0.47 micro u/ml	0.36-5.5 micro u/mL
Inhibin B	180 pg/mL	
CA-125	5.7 u/L	
CEA	1.2 mcg/L	0.8-3.4 mcg/L
AFP	1.7 ng/mL	0.6-6.6 ng/mL
Beta HCG	<0.5 u/L	<0.7 u/L

in a few cases [13]. However, based on our study, they may be expressed in both benign sertoli cells and LCCSCT tumor cells. Therefore, we compared them in tumor cells with adjacent sertoli cells. We found that calretinin and Inhibin alpha are up-regulated in

LCCSCT as compared to adjacent benign sertoli cells. S100 is focally and weakly positive in LCCSCT but not in the adjacent sertoli cells. CD99 has been reported to function as an apoptotic promoter [14-16]. In the present study we found CD99 is down-regulated in LCCSCT as compared to the adjacent sertoli cells. Consistent with most of the literature, we found in this case that PLAP, P53, Bcl-2, Mib1 and AE1/AE3 are negative in LCCSCT.

NY-ESO-1 is a cancer-testis antigen that is (physiologically) expressed in the testis as well as (aberrantly) in a growing yet limited subset of malignancies [17,18] and is expected to be expressed in sertoli cells. To date, there are no reports regarding NY-ESO-1 expression in sertoli cell tumors. In this case we first report that NY-ESO-1 is expressed in the cytoplasm of sertoli cells of the testis but not in LCCSCT. To further characterize the role of NY-ESO-1 in LCCSCT tumorigenesis, NY-ESO-1 level should be included in future studies of immunohistochemistry in LCCSCT.

In conclusion, LCCSCT is a rare testicular neoplasm, and may present in isolated rather than in more typical association with syndromes such as CNC and PJS. More case reports and the related protein expression profiling, particularly NY-ESO-1, Calretinin, Inhibin alpha, S100 and CD99, are needed to further characterize this disease.

Acknowledgement

This study was supported by the Intramural Program of the Eunice Kennedy Shriver National Institute of Child Health & Human Development (NICHD) and intramural National Institutes of health (NIH) project Z01-HD-000642-04 to C.S

References

1. Stoney RJ, Cunningham CG (1993) Acute mesenteric ischemia. *Surgery* 114: 489-490.
2. Foley MI, Moneta GL, Abou-Zamzam AM Jr, Edwards JM, Taylor LM Jr, et al. (2000) Revascularization of the superior mesenteric artery alone for treatment of intestinal ischemia. *J Vasc Surg* 32: 37-47.
3. Mamode N, Pickford I, Leiberman P (1999) Failure to improve outcome in acute mesenteric ischaemia: seven-year review. *Eur J Surg* 165: 203-208.
4. Newman TS, Magnuson TH, Ahrendt SA, Smith-Meek MA, Bender JS (1998) The changing face of mesenteric infarction. *Am Surg* 64: 611-616.
5. Oldenburg WA, Lau LL, Rodenberg TJ, Edmonds HJ, Burger CD (2004) Acute mesenteric ischemia: a clinical review. *Arch Intern Med* 164: 1054-1062.
6. Wyers MC (2010) Acute mesenteric ischemia: diagnostic approach and surgical treatment. *Semin Vasc Surg* 23: 9-20.
7. Kintu-Luwaga R, Galukande M, Owori FN (2013) Serum lactate and phosphate as biomarkers of intestinal ischemia in a Ugandan tertiary hospital: a cross-sectional study. *Int J Emerg Med* 6: 44.
8. Schermerhorn ML, Giles KA, Hamdan AD, Wyers MC, Pomposelli FB (2009) Mesenteric revascularization: management and outcomes in the United States, 1988-2006. *J Vasc Surg* 50: 341-348.
9. Acosta S, Björck M (2014) Modern treatment of acute mesenteric ischaemia. *Br J Surg* 101: e100-108.
10. Beaulieu RJ, Arnaoutakis KD, Abularrage CJ, Efron DT, Schneider E, et al. (2014) Comparison of open and endovascular treatment of acute mesenteric ischemia. *J Vasc Surg* 59: 159-164.
11. Arthurs ZM, Titus J, Bannazadeh M, Eagleton MJ, Srivastava S, et al. (2011) A comparison of endovascular revascularization with traditional therapy for the treatment of acute mesenteric ischemia. *J Vasc Surg* 53: 698-704.
12. Ryer EJ, Kalra M, Oderich GS, Duncan AA, Gloviczki P, et al. (2012) Revascularization for acute mesenteric ischemia. *J Vasc Surg* 55: 1682-1689.
13. Beaulieu RJ, Arnaoutakis KD, Abularrage CJ, Efron DT, Schneider E, et al. (2014) Comparison of open and endovascular treatment of acute mesenteric ischemia. *J Vasc Surg* 59: 159-164.
14. Park WM, Gloviczki P, Cherry KJ Jr, Hallett JW Jr, Bower TC, et al. (2002) Contemporary management of acute mesenteric ischemia: Factors associated with survival. *J Vasc Surg* 35: 445-452.
15. Acosta S, Nilsson T (2012) Current status on plasma biomarkers for acute mesenteric ischemia. *J Thromb Thrombolysis* 33: 355-361.
16. Block TA, Acosta S, Björck M (2010) Endovascular and open surgery for acute occlusion of the superior mesenteric artery. *J Vasc Surg* 52: 959-966.
17. Kougiyas P, Lau D, El Sayed HF, Zhou W, Huynh TT, et al. (2007) Determinants of mortality and treatment outcome following surgical interventions for acute mesenteric ischemia. *J Vasc Surg Off Publ Soc Vasc Surg (and) Int Soc Cardiovasc Surgery North Am Chapter* 46: 467-474.
18. Champagne BJ, Darling RC 3rd, Daneshmand M, Kreienberg PB, Lee EC, et al. (2004) Outcome of aggressive surveillance colonoscopy in ruptured abdominal aortic aneurysm. *J Vasc Surg* 39: 792-796.