

March 25-26, 2019  
Budapest, HungaryZ Elsanabary, J Univer Surg 2019, Volume:7  
DOI: 10.21767/2254-6758-C1-006

# ROLE OF OPTICAL COHERENCE TOMOGRAPHY (OCT) IN THE DIAGNOSIS OF PACHYCHOROID DISEASES

**Z Elsanabary**

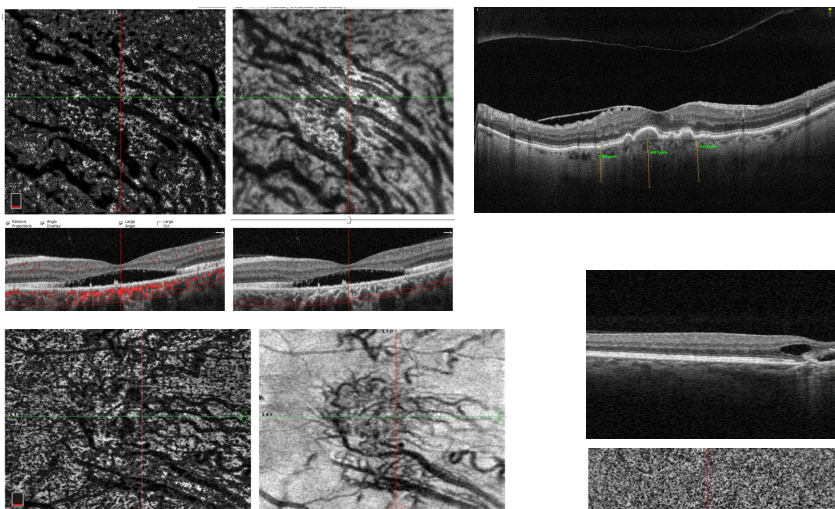
Cairo University, Egypt

**P**achychoroid is a relatively novel concept describing a phenotype characterized by attenuation of the choriocapillaris overlying dilated choroidal veins, and associated with progressive retinal pigment epithelium dysfunction and neovascularization, it includes central serous chorioretinopathy (CSC), pachychoroid pigment epitheliopathy (PPE), pachychoroid neovascularopathy (PNV), polypoidal choroidal vasculopathy/aneurysmal type 1 neovascularization (PCV or AT1), focal choroidal excavation (FCE), peripapillary pachychoroid syndrome (PPS). Diagnosis of these entities has changes the concept of treatment nowadays. Structural OCT and OCT angiographies are essential to differentiate this entity from age related macular degeneration diseases, characterized by thin choroid. The aim of this study is to describe the tips needed to reach this diagnosis while using structural OCT and OCT angiography.

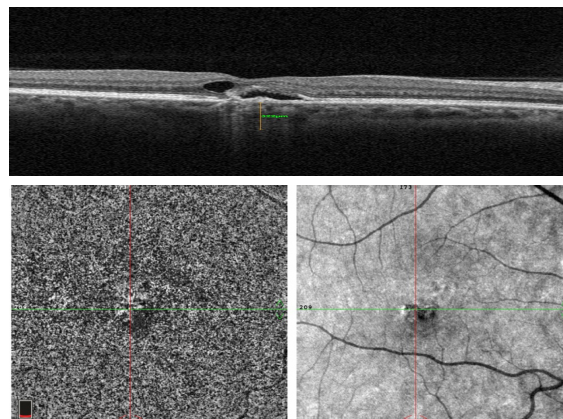
## Biography

Zeinab Elsanabary has completed her PhD in 1991 from Cairo University. She has published about 30 publications as single author or in collaboration with others and supervised about 35 theses, as Master and Doctorate and Reviewer Member in the Egyptian Universities Promotion Committee of Ophthalmology. She is Vice CEO of Bostan Diagnostic Eye Center since 2005, a specialized center for investigative ophthalmology, a recognized and pioneer center for ophthalmic diagnosis. She was Head of Ophthalmic Diagnostic Laser Unit, Kasr El Eini Hospitals, Cairo University starting from Aug' 2011 till Aug' 2015. She was assigned as Sub-investigator in a clinical trial about treat and extends in wet AMD (Novartis) in 2013 and Principal investigator in a clinical trial about Bemateprost SR implant for glaucoma (Allergan) in 2016 (ongoing). She has teaching duties for junior fellows. She got National Encouraging Award in Advanced Scientific Technology in the Medical Science 2001.

ezeinab@hotmail.com



**Figure 2:** Pachychoroid pigment epitheliopathy, showing large dilated choroidal vessels in Enface image and thick choroid in structural OCT



**Figure 3:** Pachychoroid neovascularopathy, showing thick choroid and small branching neovessels at the level of choriocapillaris in OCT angiography